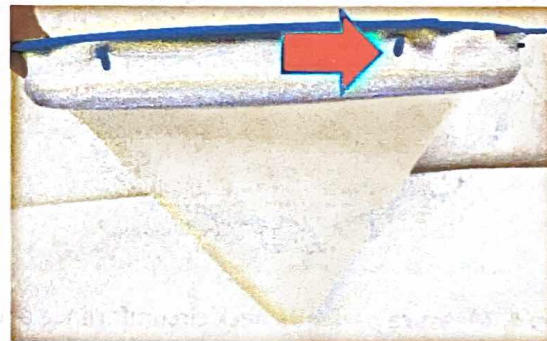
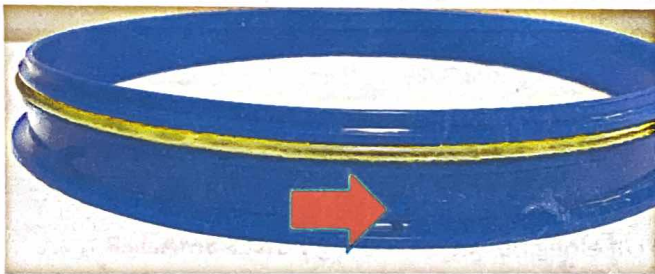


Helmet Ventilation Setup Guide

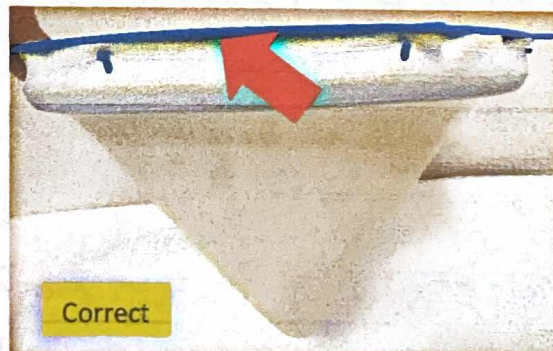
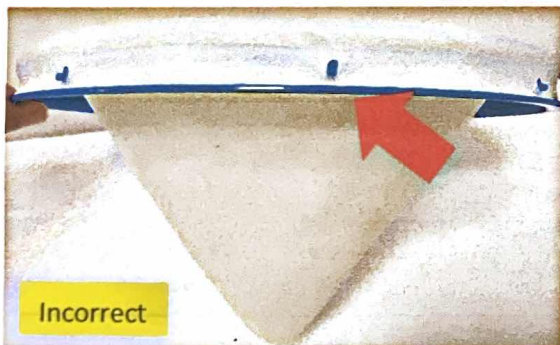
Step 1: Separate inner and outer rings (If using one-piece neckseal skip to Step 4)



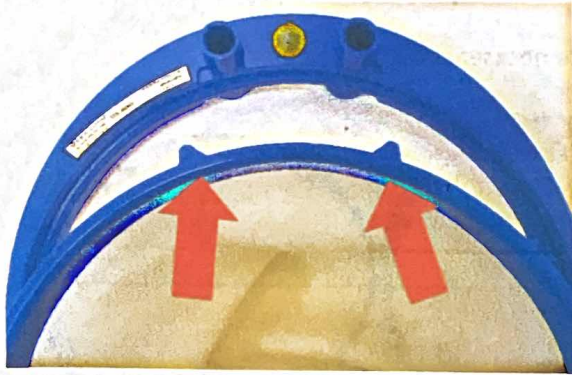
Step 2: Attach neckseal to inner ring by threading holes on neckring onto prongs encircling inner ring



Note: Ensure inner ring is oriented above, not below prongs



Step 3: Attach inner ring to outer ring by lining up ports on the inner ring with the inserts on the outer ring



Step 4: Measure patient's neck circumference and cut along rib line measuring **2 SIZES SMALLER** than Trim Guide's recommendation to ensure a snug fit *Ex: If patient's neck size is 17 1/2inches, the guide recommends to cut at the line marked 6. You would cut two sizes smaller, at the line marked 4.

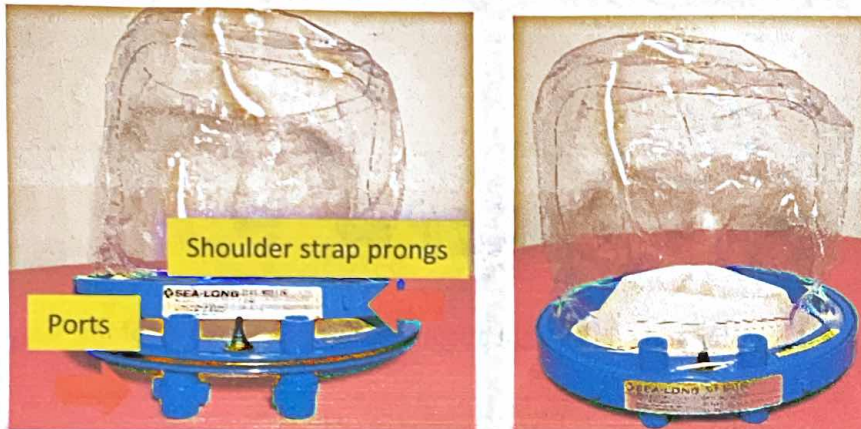


Step 5: Open head tent ensuring visor is located in front of patient's face



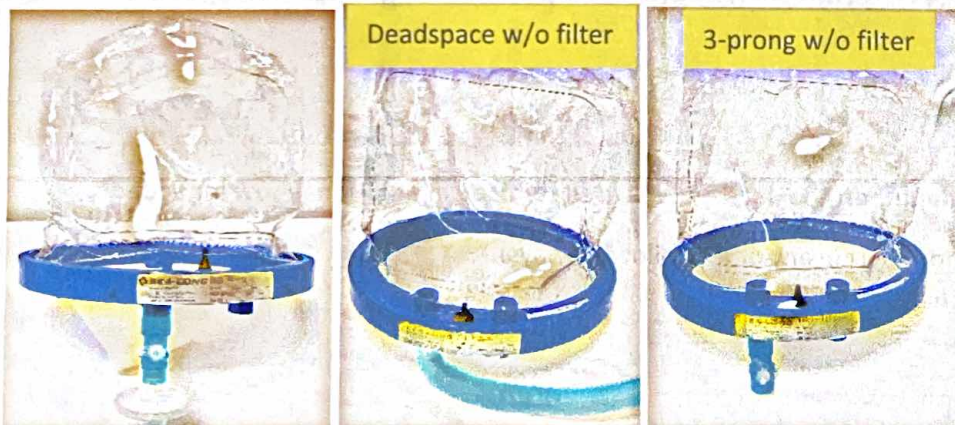
Note: Label should be in front of patient's face and can be used as a guide for correct orientation

Step 6: Attach neckring to head tent, positioning ports between shoulder strap prongs



Note: Push evenly and hard all the way around head tent beginning from ports a for tight seal

Step 7: If present, remove blue caps and attach straight adapter and filter to inspiratory port. (This adapter will be used to bleed in humidity). If choosing to omit filter, attach 100cc deadspace OR straight adapter to inspiratory port if using 3-prong adapter



***Note: It does not matter which port is selected to be inspiratory/expiratory ***